



S W M E Control Systems Trading L.L.C.

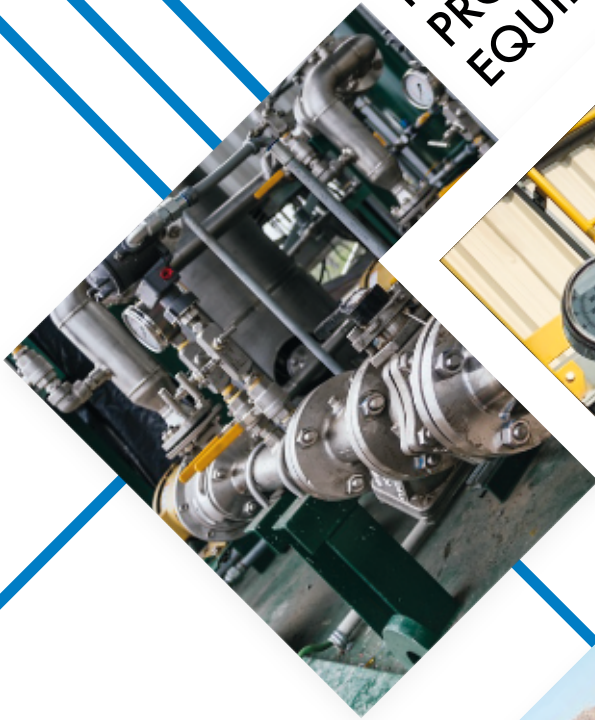
Trexavin Oil and Gas Solution L.L.C.

Silver Star Oil and Gas Solutions L.L.C.



INSTRUMENTATION &
PROCESS CONTROL
EQUIPMENTS

INDUSTRIAL MANUAL &
CONTROL VALVES OR
SAFETY VALVES



SOLAR POWER
PANELS



FILTRATION
SYSTEMS

ISO 9001 : 2015



www.swme.ae





We are and will strive to be the **'Engineer of Choice'** offering latest instrumentation products & solution provider catering to the demands of the professionals.

It will be our endeavor to make our customers more productive and add value to their businesses as well as ours by identifying their needs and providing innovative and value adding products and solutions.

We want to be a renowned and respected organization in this field by having a global presence, giving due attention to product quality and developing an efficient after sales-service infrastructure.

MISSION

A strong reputation for achievement and transformation helps us deliver sustainable growth and profit.



WE ARE DELIGHTED TO WORK WITH





INTRODUCTION

The Corporation was established to drive the organization towards constantly adding world Class Corporation in the field of Instrumentation Controls, Automation, Valve Solution and Solar Energy in order to meet the expectation of customers and be in the front to face any challenge to meet customer expectation with a Motto.

"CLOSER TO THE CUSTOMER IS THE KEY TO SUCCESS"

SWME IN A GLIMPSE



VALUES

QUALITY | **INSTRUMENTS** | **PRO** | **VIDE**
CREASED | **FIT**

Pressure / Wireless / Smart / Differential Transmitter

Sensing : Direct digital capacitance sensing

Precision : Standard : 0.06%

High Precision performance: 0.045 %,

Ultra performance: 0.03%

PID control Function

smar



WirelessHART



HART
COMMUNICATION PROTOCOL

Stainless Steel Pressure Gauge

Nominal Size : 40 to 250 mm

Wetted Parts : AISI 316L SS, Monel 400

Accuracy : $\pm 0.25\%$ to $\pm 1.0\%$ F.S.

Range : Up to 2100 BAR

KLEEV_{USA}

Hastelloy Bourdon Tube

External Zero Adjustment



Pressure Transducer

Ranges : Upto 2200 BAR G

Accuracy : $\pm 0.25\%$

Gems
Sensors



Digital Pressure Transmitter with Switches & Controller

Electric Contact Type Switching Controls Gauge

Contact: SPST / SPDT

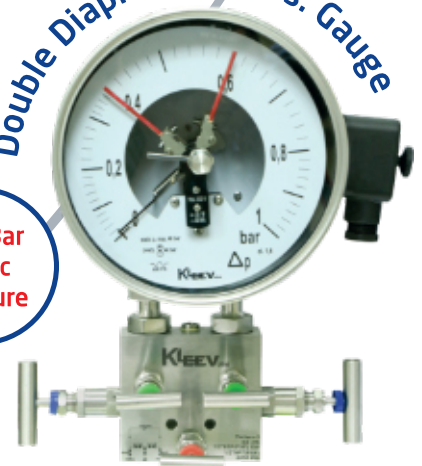
KLEEV_{USA}



Double Diaph. Diff. Pres. Gauge

400 Bar Static Pressure

KLEEV_{USA}



Nominal Size : 80 to 150 mm

Wetted Parts : AISI 316L SS / Monel 400 /

Hastelloy C / Titanium / Tantalum

Contact : SPDT / SPST / DPDT Micro Switch



SWME



SSOGS



TREXAVIN

Instrumentation & Process Control Equipment

Pressure Temperature Flow Level



120 Series SIL2-certified Pressure & Temperature Switch

Range : 30 "Hg Vac to 6000 PSI
Wide Variety of Sensor / Wetted Part Materials
Switch : SPDT, DPDT, or dual SPDT Output



Pressure Switch

Range : 0.07 to 400 BAR
Switch : SPDT or DPDT (Snap Switch)



One Series Safety Transmitter-Switch

Output : 4-20 mA Analog
Display : Large Digital
Function : Pressure or Temperature Safety



12 Series Pressure Switch

Range : 1 to 12500 PSI
MOC : AISI 316 SS
Switch : SPDT or DPDT
Hermetically Sealed



Hydraulic Pressure Regulator (Wellhead Control Panel)

Connection Size: 1/4", 3/8" & 1/2" (F)
Maximum Inlet Pressure: 10000 PSI (689 Bar)
Seat: Metal & Soft Seat



Field Signal Converters



smar



Pressure Safety Valve

Valve size: 1/8", 1/4", 1/2", 3/4", 1", M X F
Connections: Threaded BSP / NPT
MOC: AISI 316 SS / AISI 316L SS
Set pressure: 50 to 7250psig (3.4 bar to 500Bar)

Pressure Accessories



2 / 3 Way Gauge Cock



Flushing Ring

KLEEV_{USA}

Material of Construction : AISI 304 SS / AISI 316 SS / AISI 316L SS / Monel 400 / Hastelloy C / Tantalum / Inconel 625 etc.



Snubber



Diaphragm Seal



Manifolds

NACE[®]
INTERNATIONAL MR0175

Material of Construction : AISI 304 SS / AISI 316 SS / AISI 316L SS / Monel 400 / Inconel 625 / Hastelloy C

KLEEV_{USA}



Two Valve Manifold

Three Valve Manifold



Five Valve Manifold



Fittings

KLEEV_{USA}



Union Elbow



Female Branch Tee



Union

Size : 1/8" to 1" & 3 mm to 25mm
Material of Construction : AISI 316 SS / AISI 316L SS / Super Duplex / Monel 400 / Inconel 625

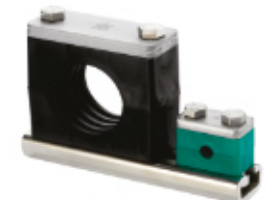


Special Hardening Process on Back Ferrules

Instrumentation Tubing



SANDVIK



MOC : AISI 316 SS / AISI 316L SS / 316Ti / Super Duplex / Monel 400 / Inconel 625.



SWME



SSOGS

TREXAVIN

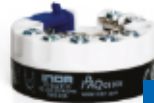


Head / DIN Rail Mounted Transmitters

Input : Thermocouple / RTD
Output : 4-20 mA



INOR Goes WIRELESS

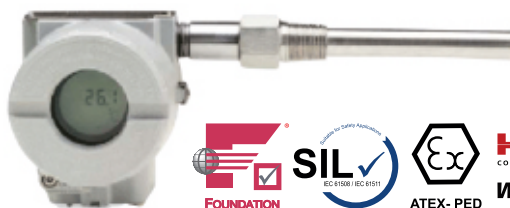


INOR



Smart / WirelessHART™ Universal High-performance Transmitters

Input : Thermocouple / RTD
Precision of 0.02% related to Span



smar



Gas Filled Thermometer

Nominal Size : 100 / 125 / 150 / 250 mm
Range : -80 to 650°C
Type : Rigid Stem / Capillary



Bimetal Thermometer

Nominal Size : 40 to 150 mm
Type : Bimetal

KLEEV USA



Industrial Thermometer

9" Scale, Adjustable Angle Stem
Range : -40 to 300°C



KLEEV USA

RTD / Thermocouple

Sensor : PT100 / PT1000 / TC-Type-K/S/T
Enclosure : Die Cast Aluminium



KLEEV USA

**Thermowell
BAR Stock - Flanged**



Positive Displacement Flowmeter

Flow : 2 LPM - 1000 LPM (> 5 cps)

Port Size : 1/4" to 4"

Pressure Ratings : 150 PSI - 2000 PSI



Metered Control Nozzles

For oils up to SAE 140, automatic trans fluids, engine oil, gear oil, hydraulic oil, coolant
Dual outlets up to 10,350kPa (1500 PSI) pressure
Flow rate up to 30LPM with 1/2" BSP (F) fluid inlet

Metal Tube Rotameter

Size : DN15 to DN100

MOC : AISI 316 SS / AISI 316L SS / Monel 400 / Hastalloy

Output : 4 - 20 Ma

Switch Output : SPDT / SPST / DPDT



Electromagnetic Flowmeter

Size : DN 6 - 2000 (1/4" to 80")

Housing : Steel / Optional Stainless Steel



Rate-Master® Polycarbonate Flowmeter

2", 5" or 10" Scale

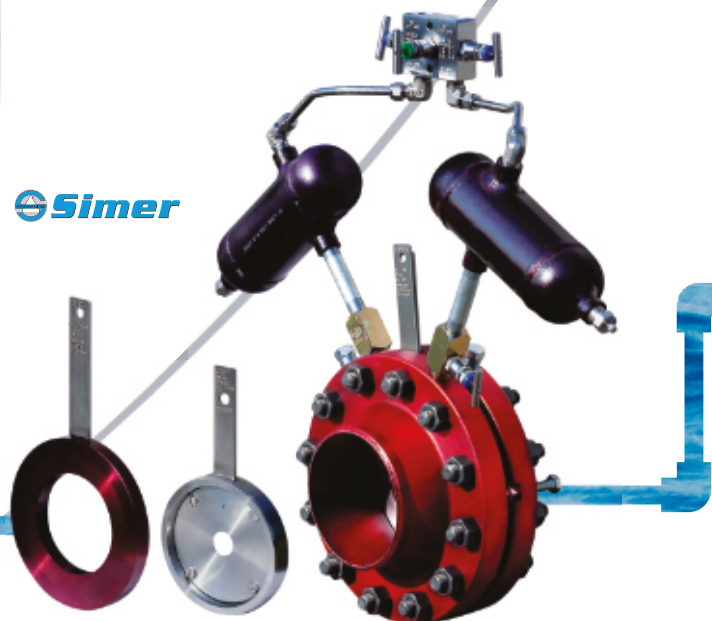


Orifice Plates & Orifice Flange Assembly

Type : Square Edge Concentric, Concentric

Orifice Bore : In Accordance With ISO 5167,

BS 1042 ASME MFC 3m, R.W. Miller, L.K APINK, AGA-3

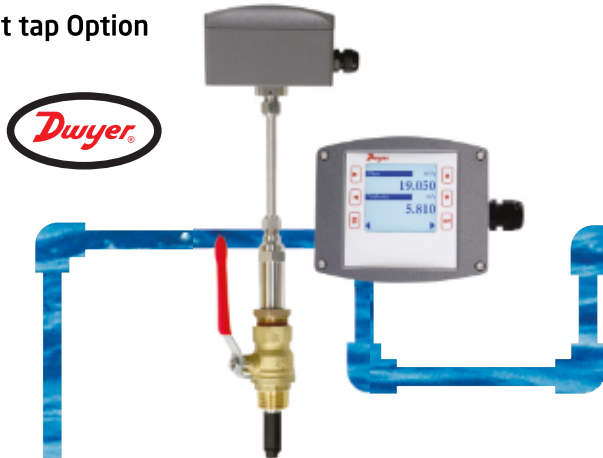




Insertion Electromagnetic Flow Transmitter

Range : 3" to 48"

Hot tap Option



Ultrasonic Energy Meter

(BTU Meter Tenant Billing Heat Metering)

Size : DN15 TO DN125

Communication Modbus, BACnet



Water Meter

Size : 25 mm to 300 mm

KLEEV USA



Vane Operated Flow Switch

Wetted Materials : Vane : AISI 316 SS

Body : Brass or AISI 316 SS



Sight Flow Indicator

Size : 1/2" to 8"

Body : Bronze or AISI 316 SS

Gasket : Buna-N, fluoroelastomer



Sight Flow Indicator

Size : 1/2" to 8"

Wetted Materials : Window : Tempered Glass

Body : Bronze or AISI 316 SS

Gasket : Buna-N, fluoroelastomer or PTFE



Instrumentation & Process Control Equipment

Pressure

Temperature

Flow

Level



Displacer Level Transmitter

Electronics : Fisher / Emersons

Liquid Level, Specific Gravity or Interface Level

Displacer Length : 100 mm to 4.5 meter

KLEEV
USA



Radar Level Meter

Supply Voltage : 18-36 V DC

Output : 4 - 20 mA

Process Pressure : 0 to 100 BAR

Dinel
industrial electronics



Ultrasonic Level Meters

Supply Voltage : 18-36 V DC

Output : 4 - 20 mA

Dinel
industrial electronics



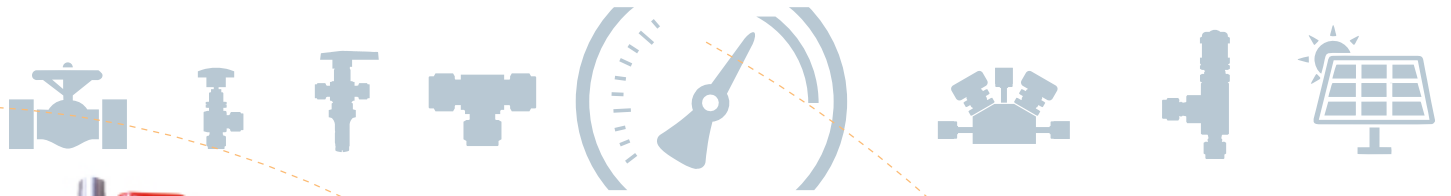
Highly Precise Pressure Level Transmitters

Level Range : 0 - 250 meter



KELLER





Reflex / Transparent Level Gauge



C-C Distance : 350 to 3500 mm
 Process Connection : Flanged
 Operating Temperature : 120°C
 Operating Pressure : 20 bar
 Sight Glass: Toughened Glass

Magnetic Level Transmitter (3 In 1)



Measuring Range : 500 to 6000 mm
 Process Pressure : Max. 100 bar
 Features (Optional) : Transmitter Enclosure SS,
 Output : 4-20 mA, HART®
 Switch : SPDT, SPST, DPDT

Float & Board Type Level Indicator



Range : 500 to 20000 mm



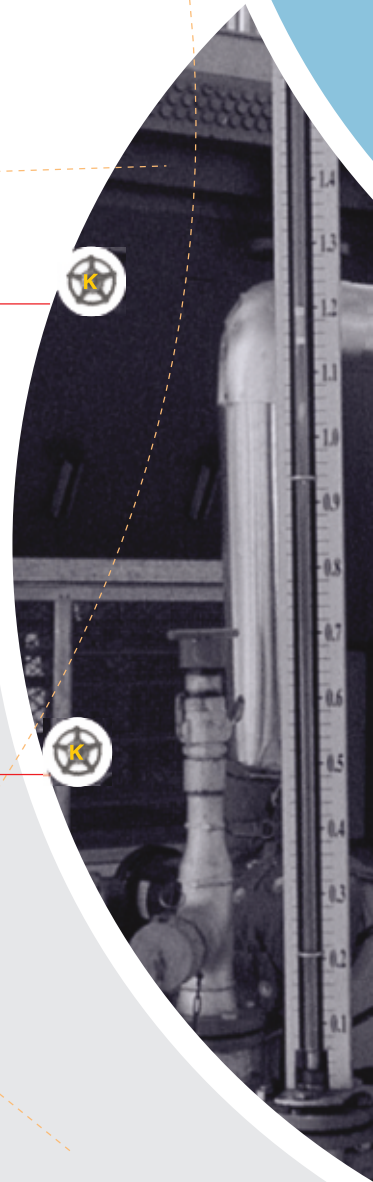
Top / Side Mounted Level Switch



Material of Float : AISI 316 SS
 Switch Rating : 5A / 250VAC
 Housing Material : Aluminium / AISI 316 SS
 Base & Cover : 316 SS
 Switch : SPDT, SPST, DPDT



Up to 4000 mm



Calibration Instruments

Marine Temperature Calibrator

Range : -17 to 1205 DegC
Accuracy : $\pm 0.4 / 0.5 / 0.9$ DegC
Stability : $\pm 0.5 / 0.1$ DegC
Radial Homogeneity : $\pm 0.05 / 0.1$ DegC
Immersion Size : 19 / 26 X 100 / 120 mm

AMETEK
CALIBRATION INSTRUMENTS



Hydraulic Hand Pump

Range : 0 to 700 BAR

KELLER



KELLER



Digital Manometer LEO Record (Ei)

Range : 0 to 1000 BAR

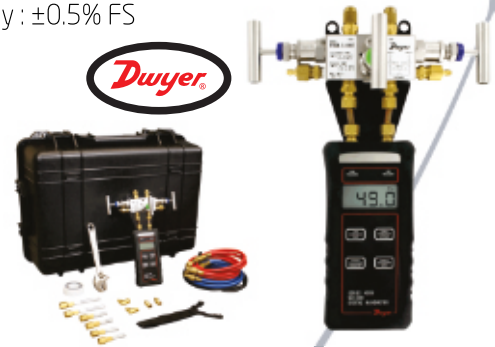


Calibration Pump Low Pressure

Range : Vacuum to 72 psig

Hydronic Differential Pressure Manometer

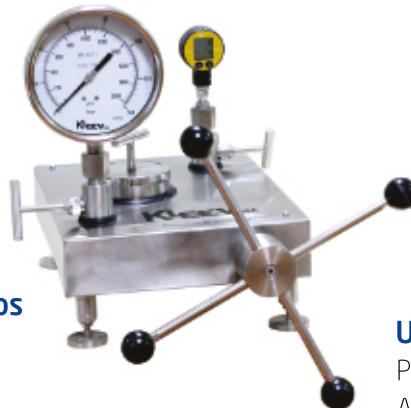
Liquid & Gas Pressure Measurement,
Accuracy : $\pm 0.5\%$ FS



KLEEV
USA

Comparison Test Pumps

Pressure : Upto 2000 PSI



Universal Indicator Cum Controller

Power Supply : 85V-265V AC
Accuracy : 0.3% F.S. ± 1 Digit

KLEEV
USA



WirelessHART Gas Detector



UE

Vanguard™ Wireless Gas Detector for Toxic and Combustible Gases

Wireless capability with WirelessHART®
Easy calibration and operation

5+ year battery life*

Service: Toxic and Combustible Gas Detector

WirelessHART

HART
REGISTERED



SWME



SSOGS

TREXAVIN



Industrial Valves



Gate Valve

Size : 2" (50 mm) to 40" (1000 mm)
Class : 150# / 300# / 600# / 900# / 1500# / 2500#
End : Flanges / Butt weld / Ring Joint Ends.
Design : API-600 / BS-1414 / BS-6364

Gate Valve

Globe Valve

Size : 1/2" (15 mm) to 16" (400 mm)
Class : 150# / 300# / 600# / 900# / 1500# / 2500#
End : Flanges / Butt weld / Ring Joint Ends.
Design : B5-1873/B5-6364

Globe Valve



Check Valve

Size : 2" (50 mm) to 24" (600 mm)
Class : 150# to 2500#
End : Flanges / Butt weld / Ring Joint Ends.
Design : BS-1868 / API 6D

Check Valve

Forged Gate, Globe & Check Valve

Forged Gate, Globe & Check Valve

Size : 1/4" (8 mm) to 2" (50 mm)
Class : 800# / 1500# / 2500#
End : Threaded / Socket Weld / Butt weld Ends.
Features: Bolted / Welded Bonnet, Cryogenic Valve, Ex. Bonnet Valve



BALL VALVE

Fire Safe, High Pressure Forged Ball Valve

Size: 1/4" (6 mm) to 30" (750 mm)
Class: 150# to 2500#
End: Flanged, Butt weld / Ring Joint /
Socket Weld / Threaded Ends
Design: API-6D / API 608 / BS EN ISO
17292



BUTTERFLY VALVE

Triple Offset Butterfly Valve

Size: 3" (75 mm) to 24" (600 mm)
Class: 150# / 300# / 600#
End: Wafer / Lug / Double Flanges
Design: API-609-B / BS 6364



Special Material & Higher Sizes are also available on request.

KLEEV



Industrial Valves

STRAINERS

"T" Type Strainer

Size : 2" (50 mm) to 24" (600mm)
Class : 150# to 600#
End : Flanged Ends

"T" Type Strainer



"Y" Strainer

Size : 1/2" (15 mm) / 2" (50 mm) to 24" (600 mm)
Class : 150# to 2500#
End : Flanged / Butt Weld / Threaded / Socket Weld Ends

"Y" Strainer



Basket (Simplex & Duplex) Strainer

Basket (Simplex & Duplex) Strainer

Size : 2" (50 mm) to 24" (600 mm)
Class : 150# to 600#
End : Flanged / Butt Weld



Conical

Size : 1/2" (15 mm) to 24" (600 mm)
Class : 150# to 600#
Features : Strainer Screens - Perforated + Wire Mesh

Conical



Special Material & Higher Sizes are also available on request.

KLEEV



Industrial Valves

General Description

Brightech Valves and Controls Pvt. Limited, is an **ISO 9001:2015** Certified Company with **25 years** of in-depth Experience Confirming to Indian as well as International Quality Standard. We are engaged in manufacturing, Exporting and supplying a wide assortment of Industrial Instrumentation Valves and PTFE Lined Product to our esteemed customers.

Spring Loaded Safety Valve

- Design, Mfg. & Tested as per API, 520, 521, 526, ASME 527.
- Sizes available from 1" x 2" to 10" x 14"
- Pressure Rating : Upto 2500#
- Material of Construction : C.S. / AISI 304 SS / AISI 316 SS / G.M. / Alloy Steel

Safe Flow



Pilot Operated Pressure / Safety Relief Valve

- Sizes Range : 1 X 2" to 10" X 14"
- Pressure Rating : Upto 400 BAR
- Material of Construction : Carbon Steel / Alloy Steel / Stainless Steel / Duplex Steel / Monel / Hastelloys



Pio-Safe

Safety & Thermal Relief Valve

- Thermal Relief Valves (BTS-10 & BTS-11) are offered in Investment Casting
- Sizes available from 1/2" x 1" to 2" x 2"
- Pressure Rating : Upto 2500#
- Material of Construction : C.S. / AISI 304 SS / AISI 316 SS / G.M. / Alloy Steel



Thermo Safe

Pressure Control Valve [Self Actuating]

- Self-Actuating / Pilot Operated Type, Cage Guided, Double Seated, Low Down-Strem Pressure Control Valve suitable to many types of Gas control.
- Soft Seating for Gas Application / Tight Stuff Off.
- Complete Gas Metering Skid consisting of Gas Filters, Isolation Valve, Pressure Control Valve, Slam, Shut-Off Valve, Safety Valve and Pressure Gauge
- Size Range : 1" to 6"
- Pressure Rating : Upto 300#

Bri-Con



Pressure Reducing Gas Skid



Industrial Valves

Pneumatic / Motorized Control Valve

- Globe type, Single spring & Diaphragm Actuated, Throttling or On / Off Type Control Valve.
- Material of Construction : Carbon Steel, Alloy Steel, AISI 316 SS, Monel 400, Inconel 625
- Actuator Types : Direct / Reverse / Motorized Type
- Size Range : 1/2" to 20"
- Pressure Rating : Upto 2500#
- Accessories : Smart Positioner / Solenoid Valve / Limit Switch / AFR / Volume Booster / Quick Exhaust / Side & Top Mounted Hand wheel etc.



Bri-Con

Automatic Control Valve



Actrol

- Self Actuating, Hydraulically Diaphragm & Pilot Operated Design.
- By changing only the pilot / Tubing the ACV is able to perform a different functions like Pressure Reducing / Pressure Relief / NRV / Pump By-Pass / Booster Pump Control / Level Control / Solenoid Control (On-Off) / Flow Control / Digital set-stop & many more.
- Size Range : 1" to 16"
- Pressure Rating : Upto 300#

PTFE/PFA Lined Valve



BALL VALVE

Flouro-Line



PLUG VALVE

PTFE/PFA Lined Safety Relief Valve



Safe-Line

SAFETY RELIEF VALVE

Pressure Reducing Valve & De-superheating Station

- Self Actuating, Pilot & Piston / Robotrol Operated , Globe type, Top & Bottom Guided , Spring & Diaphragm Actuated Single seated Down Stream Pressure Control Valve .
- Size Range : 1" to 6"
- Material of Construction : Carbon Steel, Alloy Steel, AISI 316 SS
- Pressure Rating : 150# / 300#
- Application : Steam / Air



Steam-Con



Brightech
Fluid Control Solutions

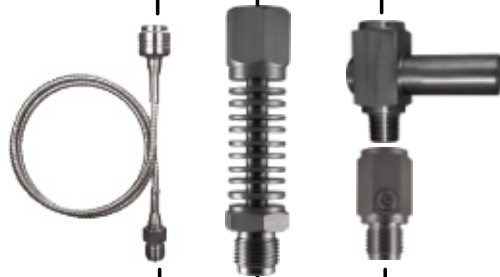
Diaphragm seal services (Integration / Repair / Refurbishment / Testing)



ANY
BRAND



VARIOUS
ACCESSORIES
OPTION



VARIETY
OF
SEALS



ARRAY OF SEAL WETTED
MATERIAL

- SS 316
- SS 316L
- MONEL - 400
- HASTELLOY - C276
- SUPER DUPLEX
- TANTALUM TITANIUM
- INCONEL 625
- MANY MORE...

SEAL INTEGRATION COMBINATION

Repair work steps

- E-mail a photo and description of assembly to us.
- SWME will send a repair estimate.
- Upon receipt of the transmitter, SWME will verify transmitter function and confirm the repair estimate.
- The transmitter is filled with brand new diaphragm seal assembly and certified with calibration equipment. Typical turn around is only 5 days!
- The assembly is returned to the customer with 1-Year Limited Warranty on the diaphragm seal system.



BEFORE



AFTER



As an authorized distributor of **Klengas Tech LLP Products**, which is an organization led by techno-commercial personnel with technocrats leading from the front, we have combined professional experience of over 55 years in the filtration and separation of processes and equipment across industries. Adept in application engineering, project engineering, execution, installation and commissioning, and application development. Lead and guide teams across geographies by providing innovative solutions in various industry segments.





Large Flow Filter

Media: PP, GF & Polyester
Removal Rating: 0.2 ~ 500 μ m
Diameter: 4.5" ~ 6"
Length: 10" ~ 80"
Seals: Viton, EPDM, Silicone & FEP



Promax Filter

Media: PP, GF
Removal Rating: 0.2 ~ 200 μ m
Diameter: 2.5"
Length: 5" ~ 60"
Seals: Viton, EPDM, Silicone & FEP



Smitmann

Media: PP & GF
Removal Rating: 0.2 ~ 50 μ m
Diameter: 6"
Length: 15" & 30"
Seals: Viton, EPDM, Silicone & FEP



Bag Filter

Media: PP, Nylon & GF
Removal Rating: 1 ~ 200 μ m
Size: 4" & 7" \varnothing ; 17" & 32" L
Sealing Collar: PP, Polyester & Steel Ring



Pleated Wire Mesh Filter

Media: SS304 / SS316 / SS316L
Removal Rating: 5 ~ 500 μ m
Diameter: 2" ~ 6"
Length: 5" ~ 80"
Seals: Viton, EPDM, Silicone & FEP



Sintered Metal Powder Filter

Media: SS316 / SS316L
Removal Rating: 0.2 ~ 50 μ m
Diameter: 2" ~ 2.5"
Length: 2.5" ~ 60"
Seals: Viton, EPDM, Silicone & FEP



Welcome to the realm of safety and reliability in sheet metal explosion-proof enclosure manufacturing. We are an authorized distributor of **Kleev Middle East FZE**, which is a leading company dedicated to designing and manufacturing top-tier, customized ex-proof enclosures for a wide array of industries and applications. Which includes the empty terminal box and electrical equipment - Local Control Panel (LCP) and accessories.



-  Long life & high temperature resistant door seal
-  IP-66/65/55 & Lower
-  Weatherproof
-  Fire retardant & Self extinguishing
-  Wall thickness 1.6mm for SS, 4mm of GRP
-  Semi-gloss external gelcoat finish
-  Customizable
-  High impact resistant-IK10
-  Non corrosive hardware
-  Anti-static

Material: Stainless Steel or Mild Steel

Surface: Natural, brushed and Painted

Gasket: Silicone

Ingress Protection: IP 66 in acc. With IEC 60529

Operating Temperature: -35°C ~ 160°C

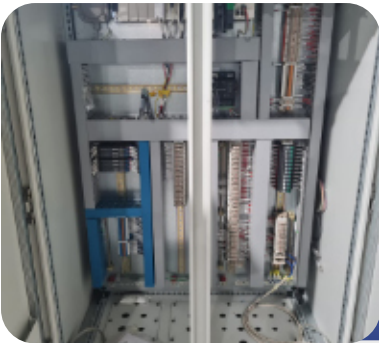
Area Classification: Zone 1 / 2 / 21 / 22

Accessories: Gland Plate, Mounting Plate, Breather / Drain Plug



As an authorized distributor of **Kleev Middle East FZE's** products, which consist of panel building & hardware integration of Industrial Control Panels for clients in a wide range of industries. KLEEV 's technical teams throughout the region have the required expertise for the design, procurement, and assembly of control panels and the associated integrated electrical equipment.

Kleev's Panel Assembly can be part of a turn-key project or an individual service based on customer requirements. To ensure quality, all panels must pass through quality control (QC) before shipment.



Wiring

Cut to length, labeled, and placed into individual harnesses with exacting precision that's Systems Control. Every connection we make is functional and durable with outstanding craftsmanship.



Control Panel

We have Professional Engineers prepared to handle your critical design projects. Our team will work with you, from inception to installation.



Fabrication

After finalising the custom design process, it is time for us to build the control panel fabrication processes can be used for a wide range of tools.



Testing

Panel wiring, building wiring and integration all tested with our North American leading Utility Benchmark standard.



As an authorized distributor of **Kleev Middle East FZE** products, we offer **off-grid solar power solutions** for the oil and gas industry that are cost-effective and reliable. Their proven solar systems have the capability to be deployed by some of the largest oil and gas companies like ADNOC, KOC, PDO, OXY, Tatweer, BAPETCOetc.

Solar Power System for Oil and Gas Industry,
Specialist in Ex-Proof  approved solar integrator.

Output voltage options

| 12V DC /24V DC /48V DC /230V CA /410V CA

Battery capacity capabilities

| Upto 5, 7, 10 Day's Autonomy

SOLAR SOLUTIONS FOR OIL & GAS

- Well Head Control Panel
- Control Valve
- Chemical Injection System
- Cathodic Protection
- Video surveillance
- RTU/SCADA
- Gas Flow Measurement
- Mineral Exploration Camps
- CCTV Cameras
- Off-Grid solar power system
- Flow Metering System



APPROVED



From design to commissioning End to end customized solar solutions

KLEEV

Solar PV Module



Battery

KLEEV

Battery Enclosures

KLEEV



Mounting Structures

KLEEV

Solar Cables & Inter Connection Cables



Inverter

Charge Controller

KLEEV

KLEEV Control Panel Enclosure

Distribution enclosures



SOLAR EPC SERVICES

Design

- Cost Estimation
- Architectural Design
- Project Feasibility Studies
- Technology

Engineering

- Front end Engineering
- Planning & Scheduling
- Safety Planning
- System Integrator

Procurement

- Contracts Management
- Raw material purchase
- Vendor sourcing
- Quality Controls
- Storage Controls

Commissioning

- Trail Runs
- Quality Checks
- Safety Protocols
- Certifications

Operation & Maintenance

- Preventive Maintenance
- Performance Management
- Facility Management
- Plant Maintenance

Solutions

- Off-Grid Solar Power System for Oil & Gas
- Solar - Diesel Hybrid System
- Containerised Solar Solutions
- Solar Car Parking System
- Portable Solar power System
- Solar Street Lighting System
- Solar Water Pumping System





USA / UAE



USA



USA



UK



SWITZERLAND



AUSTRALIA



CZECH REPUBLIC



SWEDEN



ITALY



BRAZIL



FRANCE



HUNGARY



INDIA



INDIA

Dubai

S W M E Control Systems Trading L.L.C.
P. O. Box: 46123, Dubai, U.A.E.
Contact No.: +971 4 323 2023
Fax No.: +971 4 323 2024
Email: dubai@swme.ae
www.swme.ae

Abu Dhabi

Trexavin Oil And Gas Solution L.L.C.
P. O. Box: 132968, Abu Dhabi, U.A.E.
Contact No.: +971 2 448 5599
Fax No.: +971 2 448 5598
Email: info@trexavin.com
www.trexavin.com

Sultanate Of Oman

Silver Star Oil and Gas Solutions L.L.C.
P. O. Box: 1667, P.C.: 114,
North Misfah, Sultanate Of Oman
Contact No.: +968 2 2005088
Fax No.: +968 2 2005089
Email: info@ssogs.com
www.ssogs.com

CONTACT US

Australia

Konik Australia Pty Ltd.
38 Tarcoola Crescent, Point Cook,
Victoria 3030, Australia
Contact No.: +61 450 034 478
Email: info@konikaus.com.au
www.konikaus.com.au

India

Ventil Flow Serve Pvt. Ltd.
4/A, Krishna Gopal Estate,
Old Forge & Blower Compound,
Ahmedabad-380025, Gujarat, India
Contact No.: +91 99788 81133
Email: info@ventilflowserve.com

India

Effex Industrial Solutions Pvt. Ltd.
Unit No.: 09, Hasti Industrial Estate,
Plot No.: R-798, TTC Industrial Area,
Mahape-400710, India
Contact No.: +91 22 27780822
Email: info@effex.co.in